



THE CORDLESS TOOLS COMPANY

EXTREME CORDLESS POWER

Cordless Chain Saw

Gergaji Rantai Tanpa Kord 充电式链锯

DUC356 350mm (14") | DUC406 400mm (16")

Highly efficient cutting

Pemotongan Kecepatan Tinggi 高效率切割



18V Lithium-ion X2
18V 锂离子 X2



Teknologi Ekstrim Lithium-ion
锂离子技术



Motor tanpa berus
无碳刷马达



EXTREME PROTECTION TECHNOLOGY
Teknologi Perlindungan Ekstrim
防尘防水滴技术



PRODUCT DETAILS
Models and specs may vary by country



*Jumlah Kerja 工作量
Work Amount
 with BL1850B x2
 (50mm Timber)
500cuts
 (approx.)



* Continuous Usage Time/ Work Amount:
 Actual performance may vary based on application.
 Masa Penggunaan Berkesinambungan/ Jumlah Kerja: Perbedaan sebenarnya mungkin berbeda bergantung aplikasi.
 连续使用的时间/ 工作量: 实际表现可能因应用情况而异。

Efficiency equivalent to 30cc class engine chain saws

Kecekapan setara dengan gergaji rantai enjin kelas 30cc
效率相当于30cc级引擎式链锯机

18v + 18v → 36v



Highly efficient cutting

Direct drive of high output BL motor provides high saw chain speed; enabling to cut a workpiece without pushing hard

Pemotongan kecekapan tinggi
Motor tanpa berus memberikan kelajuan rantai tinggi untuk pemotongan cekap
高效率切割
无碳刷马达提供高链速，并能达到省力切割

• **Approximately 25% faster current 30cc engine model in cutting a 200mm cedar timber**

Kapasiti pemotongan meningkat sekitar 25% berbanding dengan model enjin 30cc semasa memotong kayu cedar 200mm
切割能力约增长25%
相比目前30cc引擎切割 200mm雪松木材

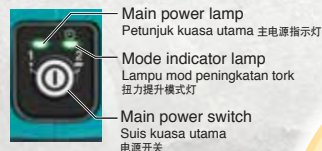
Torque boost mode

Torque boost mode provides more power for cutting thick branches or hard branches

Mod peningkatan tork
Peningkatan tork untuk memotong dahan tebal dan keras
扭矩提升模式
可在扭矩提升模式中，切割粗厚树枝或硬树枝

• **Approximately 45% faster than current 30mL engine model in cutting a 300mm cedar timber**

Kira-kira 45% lebih cepat daripada model enjin 30mL semasa memotong kayu cedar 300mm
在切割300毫米雪松木材时，比目前的30毫升发动机型号快约45%



Main power lamp
Petunjuk kuasa utama 主电源指示灯
Mode indicator lamp
Lampu mod peningkatan tork
扭力提升模式灯
Main power switch
Suis kuasa utama
电源开关

*Push main power switch for a few seconds until the mode indicator lamp lights up in green

Tekan suis daya utama selama beberapa saat sehingga penunjuk mod menyalu hijau
按下主电源开关几秒钟，直到模式指示灯呈绿色亮起

Net weight
Berat Bersih 净重

4.6kg

with BL1850B x2
5.0Ah Battery



High operating efficiency
Outer Rotor Brushless Motor direct-drive system provides high operating efficiency
Motor tanpa berus memberikan operasi yang cekap
无碳刷马达提供高效能运转

High operability

Chain brake and variable speed trigger switch provide high operability equivalent to engine chain saw
Brek rantai dan suis pencetus pelbagai kelajuan untuk operasi yang cekap bersamaan dengan gergaji rantai enjin
链条制动器和变速开关像引擎链锯机一样，提供高操作性



Battery capacity warning lamp
Lampu amaran kapasiti bateri 电池容量警示灯



Main power switch with auto power-off function
Suis kuasa utama dengan fungsi pemadaman automatik 主电源开关具自动断电功能



Variable speed trigger switch
Pencetus kelajuan berubah 无段变速扳机开关



Excellent tool balance
Suis keseimbangan mesin 机器重心平衡



Hanging D-ring
Rope attachment point
Cangkuk bentuk D 型钩环可挂绳索



Adjustable automatic chain lubrication
Pelinciran rantai automatik boleh dilaras
可调节的自动链条润滑



Chain oil level window
Tingkap paras minyak rantai 链条油位视窗



Metal chain catcher
pemegang rantai logam 金属链夹



Captive nuts prevent loss of nut
Ketetapan nat untuk mencegah kehilangan nat
固定式螺母在拆卸链轮盖以更换导杆或锯链时，防止螺母丢失



Accessories (Optional)

Aksesori 配件

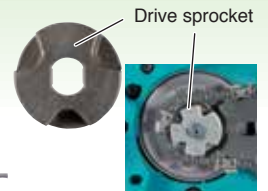
Guide bar / Saw chain / Guide bar cover / File diameter / Drive sprocket

Bar panduan / Rantai gergaji / Penutup bar panduan / Kikir / Gecang 导板 / 链锯条 / 安全盖 / 锉刀 / 链轮

*Carving bar
**Sprocket nose bar (Micro-Lite)
***Sprocket nose bar



Cutter type:
MC: Micro chisel,
CC: Chamfer chisel



Guide bar		Saw chain					Bar cover Part No.	File diameter		Drive sprocket		
Bar length	Part No.	No. of drive links	Gauge	Pitch	Cutter type	Saw chain Part No.		1st half of top plate	2nd half of top plate	Pitch/ No. of teeth	Part No.	
25cm/10"	*168407-7	60	1.3mm/ .050"	1/4"	25AP	MC	194098-8	452093-7	4.0mm	4.0mm	1/4" / 9	198259-2
25cm/10"	**161846-0	40	1.1mm/ .043"	3/8"	90PX	CC	199075-5	452093-7	4.5mm	4.0mm	3/8" / 6	199063-2
25cm/10"	***168408-5	40	1.3mm/ .050"	3/8"	91PX	CC	196205-9	452093-7	4.0mm	4.0mm	3/8" / 6	199063-2
30cm/12"	**165245-8	46	1.1mm/ .043"	3/8"	90PX	CC	196740-7	419288-5	4.5mm	4.0mm	3/8" / 6	199063-2
30cm/12"	***165200-0	46	1.3mm/ .050"	3/8"	91PX	CC	196206-7	419288-5	4.0mm	4.0mm	3/8" / 6	199063-2
35cm/14"	**165246-6	52	1.1mm/ .043"	3/8"	90PX	CC	196741-5	419288-5	4.5mm	4.0mm	3/8" / 6	199063-2
35cm/14"	***165201-8	52	1.3mm/ .050"	3/8"	91PX	CC	196207-5	419288-5	4.0mm	4.0mm	3/8" / 6	199063-2
40cm/16"	**165247-4	56	1.1mm/ .043"	3/8"	90PX	CC	196742-3	419242-9	4.5mm	4.0mm	3/8" / 6	199063-2
40cm/16"	***165202-6	56	1.3mm/ .050"	3/8"	91PX	CC	196208-3	419242-9	4.0mm	4.0mm	3/8" / 6	199063-2

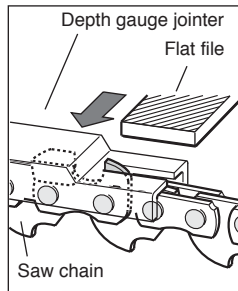
Depth gauge jointer 导板链锯尺规

After sharpening the chain, check the height of the depth gauge using the chain gauge tool

Setelah mengasah rantai, gunakan alat pengukur kedalaman untuk memeriksa ketinggian mata rantai

锐化链条后, 使用测深工具检查链条刀刃的高度

Part No.
953 100 090



Flat file 扁锉刀

Part No.
953 003 060



Chain oil & BIOTOP Chain oil

Minyak rantai dan minyak rantai BIOTOP 链条油和BIOTOP链条油



Chain oil		BIOTOP Chain oil	
Size	Part No.	Size	Part No.
100ml	182229-1	1L	980 008 610
1L	988 002 656	5L	980 008 611
5L	988 002 658		

File and File holder

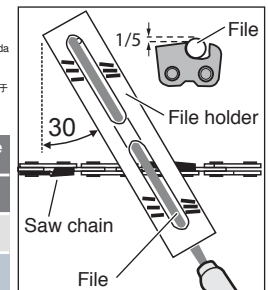
Set Kikir 磨刀规

The file can be guided more easily if a file holder is employed. The file holder has markings for the correct sharpening angle of 30° (align the markings parallel to the saw chain) and limits the depth of penetration (to 4/5 of the file diameter)

Kikir dapat digunakan dengan lebih mudah sekiranya pemegang kikir digunakan. Pemegang kikir mempunyai tanda untuk sudut penajaman yang betul 30° (sejajarkan tanda yang selari dengan rantai gergaji) dan menghadkan kedalaman penembusan (max 4/5 dari diameter kikir)

如果有使用磨刀架 (辅助物件), 全靠磨刀架磨刀, 磨刀架具有30° 正确磨削角度的标记 (对齐平行于锯链的标记), 并且限制穿透深度 (最多至磨刀直径的4/5)

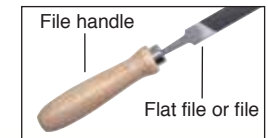
Size	Saw chain type	File	File and File holder
		Part No.	Part No.
4mm	25AP, 91PX	953 003 090	195089-2
4.5mm	90PX	953 003 100	195923-6



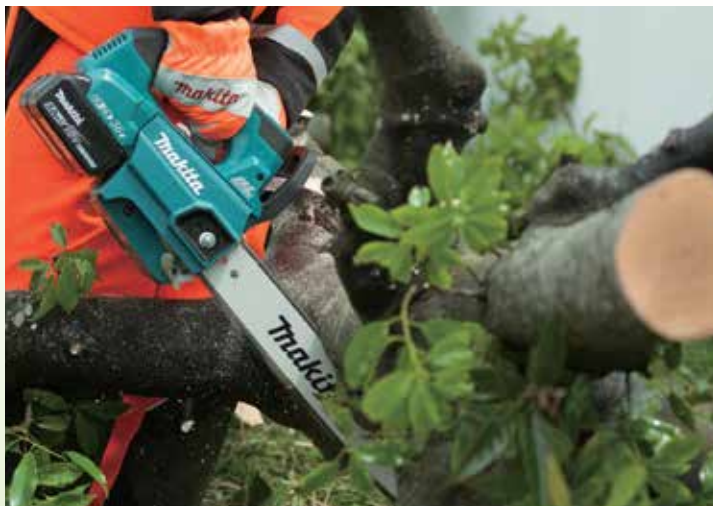
File handle 磨刀柄

For flat file and file

Part No.
953 004 010



270x205x232mm (10-5/8"x8-1/8"x9-1/8")



DUC356Z | DUC406Z

Li-ion Ah 6.0 5.0 4.0 3.0 2.0 1.5

Guide Bar Length Panjang Batang Gergaji 切割长度	350mm (14") DUC356 400mm (16") DUC406
Chain Pitch Kerapatan Rantai 链条齿距	9.5mm (3/8")
Chain Gauge Ketebalan Rantai 链条厚度	1.3mm (0.05")
Chain Speed Kelajuan Rantai 链条速度	0 - 20m/s (0 - 1,200m/min) (0 - 3,940FPM)
Chain Oil Tank Volume Tangki Minyak Pelincir 链油箱	200mL
Dimensions (L x W x H) without guide bar Dimensi 体积	270-651x205x232mm (10-5/8"-25-5/8"x8-1/8"x9-1/8")
Net Weight Berat Bersih 净重	5.1kg (11.1lbs.)



Standard equipment Aksesori standard 标准附件
DUC356Z: Saw Chain, Guide Bar, Guide Bar Cover, Spike Bumper, Chain Oil, Socket Wrench
DUC406Z: Saw Chain, Guide Bar, Guide Bar Cover, Chain Oil, Socket Wrench

Available options Pilihan 选项
Z: Without Charger & Battery

Like us on Facebook
MAKITA MALAYSIA

* Continuous Usage Time/ Work Amount: Actual performance may vary based on application. Items of standard equipment and specifications may vary by country or area. The weight and dimensions may differ depending on the attachment(s), including the battery cartridge. All pictures shown are for illustration purposes only. In the event of differences arising between the English, Bahasa Malaysia and Chinese versions, the English version shall prevail. Masa Penggunaan Beterusan/ Jumlah Kerja: Prestasi sebenar mungkin berbeza mengikut aplikasi. Spesifikasi standard mungkin berbeza mengikut negara. Berat bersih dan dimensi berbeza bergantung pada jenis bateri yang digunakan. Imej yang ditunjukkan hanya untuk tujuan ilustrasi sahaja. Jika terdapat perbezaan antara bahasa, maka maklumat versi Bahasa Inggeris harus digunakan. 连续使用时间/ 工作量: 实际表现可能因应用情况而异。注: 规格可能因销往国家之不同而异。重量与尺寸因附件(包括电池组)而异。图片仅供参考, 如果内容有任何差异或不一致, 概以英文版本为准。

Makita Power Tools (Malaysia) Sdn. Bhd. Co. Registration No.: 201301001778 (1031615-M)

HQ & Service Centre
总部和服务展示中心
Lot 824, Jalan Subang 5, Subang Industrial Area,
47500 Subang Jaya, Selangor.
Tel: 03-8023 0824 (General) | Fax: 03-8022 1448
03-8022 1443 (Service)

Johor (Johor Bahru) Service Centre
柔佛 (新山) 服务与展示中心
No. 12 & 14, Jalan Rosmerah 2/9,
Taman Johor Jaya,
81100 Johor Bahru, Johor.
Tel: 07-364 9406 | Fax: 07-364 9407

Sarawak (Kuching) Service Centre
砂拉越 (古晋) 服务与展示中心
Lot 1227, Lorong Demak Indah 2A,
Demak Laut Industrial Area, Phase 2A,
93050 Kuching, Sarawak.
Tel: 082-496 800 | Fax: 082-496 900

Sabah (Kota Kinabalu) Service Centre
沙巴 (亚庇) 服务与展示中心
Lot 19, Jalan Buah Duku,
Kolombong Light Industrial Estate, Off Kolombong,
Kolombong Zone 1, 88450 Inanam, Kota Kinabalu, Sabah.
Tel: 088-388 278 | Fax: 088-388 279

12 MONTHS WARRANTY
Warranty 12 bulan • 12 个月保修期



www.makita.my
makita@makita.my