



# Cordless Crimper DTC301 / DTC302



PRODUCT  
DETAILS

Models and specs  
may vary by country



PRODUCT  
DETAILS

Models and specs  
may vary by country



**18V**  
LITHIUM-ION

Capable of crimping terminals onto large-diameter electric wires

## DTC301

Ram stroke length: 31 mm



## DTC302

Ram stroke length: 42 mm



### Crimping capacity

#### DTC301

Cu  
Ø19.5 mm  
(300 mm<sup>2</sup>)

Al  
Ø19.5 mm  
(300 mm<sup>2</sup>)

#### DTC302

Cu  
Ø22.5 mm  
(400 mm<sup>2</sup>)

Al  
Ø19.5 mm  
(300 mm<sup>2</sup>)

|                   |    | DTC301                         | DTC302                         |
|-------------------|----|--------------------------------|--------------------------------|
| Ram stroke length |    | 31 mm                          | 42 mm                          |
| Crimping capacity | Cu | ∅19.5mm<br>300 mm <sup>2</sup> | ∅22.5mm<br>400 mm <sup>2</sup> |
|                   | Al | ∅19.5mm<br>300 mm <sup>2</sup> | ∅19.5mm<br>300 mm <sup>2</sup> |

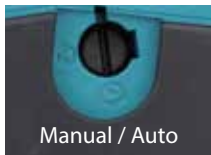
### Crimping head

The head rotates 270 degrees, making it easy to use in a variety of orientations.



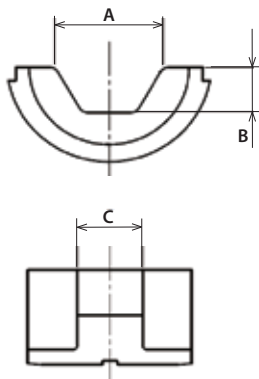
### Auto retract function

- The ram automatically retracts to its original position after completing the crimping operation, enhancing work efficiency.
- The On/Off setting of the auto retract function can be switched by turning the screw.



Manual / Auto

### Accessories (optional)



### Hex. Die

Hexagonal (U-type) dies to crimp copper and aluminum terminals with the 12-ton crimper (Compatible with DIN46235)

| Die No. | Range (mm <sup>2</sup> ) | A (mm) | B (mm) | C (mm) | Part No.   |
|---------|--------------------------|--------|--------|--------|------------|
| K6      | Cu 10                    | 6.2    | 2.2    | 12     | ZM00000216 |
| K8      | Cu 16                    | 8.2    | 3.0    | 12     | ZM00000217 |
| K10     | Cu 25 / Al 16            | 9.7    | 3.6    | 12     | ZM00000218 |
| K12     | Cu 35 / Al 25            | 11.8   | 4.4    | 14     | ZM00000219 |
| K14     | Cu 50 / Al 35            | 13.8   | 5.3    | 14     | ZM00000220 |
| K16     | Cu 70 / Al 50            | 15.8   | 6.0    | 14     | ZM00000221 |
| K18     | Cu 95 / Al 70            | 18     | 7.0    | 14     | ZM00000222 |

| Die No. | Range (mm <sup>2</sup> ) | A (mm) | B (mm) | C (mm) | Part No.   |
|---------|--------------------------|--------|--------|--------|------------|
| K20     | Cu 120 / Al 95           | 19.8   | 7.6    | 14     | ZM00000223 |
| K22     | Cu 150 / Al 120          | 22.3   | 8.7    | 13     | ZM00000224 |
| K25     | Cu 185 / Al 150          | 24.3   | 9.6    | 12     | ZM00000225 |
| K28     | Cu 240 / Al 185          | 27.8   | 11.5   | 11     | ZM00000226 |
| K32     | Cu 300 / Al 240          | 31.5   | 13.6   | 9      | ZM00000227 |
| K34     | Cu 400 / Al 300          | 33.7   | 14.5   | 7      | ZM00000228 |

### Die release knob

### Die release pin



### Release knob

To retract the ram manually, press the release knob.

### LED job light

Single LED with afterglow function



## DTC301ZK | DTC302ZK

### Cordless Crimper

- Trigger-lock function to minimize accidental pulling of the switch trigger.
- Soft grip provides increased comfort during use.



• ZK: With Carrying Case, Without Charger & Battery



|                           |        |  |
|---------------------------|--------|--|
| Output Force              | 120 kN |  |
| Ram Stroke Length         | DTC301 | 31 mm (1-1/4")   |
|                           | DTC302 | 42 mm (1-5/8")   |
| Crimping Capacity         | DTC301 | Cu: ∅ 19.5 mm (300 mm <sup>2</sup> )<br>Al: ∅ 19.5 mm (300 mm <sup>2</sup> ) |
|                           | DTC302 | Cu: ∅ 22.5 mm (400 mm <sup>2</sup> )<br>Al: ∅ 19.5 mm (300 mm <sup>2</sup> ) |
| Dimensions (L x W x H)    | DTC301 | 415 x 92 x 346 mm<br>(16-3/8 x 3-5/8 x 13-5/8")                              |
|                           | DTC302 | 437 x 94 x 349 mm<br>(17-1/4 x 3-11/16 x 13-3/4")                            |
| Net Weight (with battery) | DTC301 | 6.8 - 7.1 kg (15.0 - 15.7 lbs.)  |
|                           | DTC302 | 7.5 - 7.8 kg (16.5 - 17.2 lbs.)  |

Like us on Facebook  
**MAKITA MALAYSIA**

• Continuous Usage Time/ Work Amount: Actual performance may vary based on application. Items of standard equipment and specifications may vary by country or area. The weight and dimensions may differ depending on the attachment(s), including the battery cartridge. All pictures shown are for illustration purposes only.

**12 MONTHS WARRANTY**

**Makita Power Tools (Malaysia) Sdn. Bhd.** Co. Registration No.: 201301001778 (1031615-M)

#### HQ & Service Centre

Lot 824, Jalan Subang 5, Subang Industrial Area, 47500 Subang Jaya, Selangor  
Tel: 03-8023 0824 (General) | Fax: 03-8022 1448  
03-8022 1443 (Service)

#### Johor (Johor Bahru) Service Centre

No. 12 & 14, Jalan Rosmerah 2/9, Taman Johor Jaya, 81100 Johor Bahru, Johor  
Tel: 07-364 9406 | Fax: 07-364 9407

#### Sarawak (Kuching) Service Centre

Lot 1227, Lorong Demak Indah 2A, Demak Laut Industrial Area, Phase 2A, 93050 Kuching Sarawak  
Tel: 082-496 800 | Fax: 082-496 900

#### Sabah (Kota Kinabalu) Service Centre

Lot 19, Jalan Buah Duku, Kolombong Light Industrial Estate, Off Jalan Kolombong, Kolombong Zone 1, 88450 Inanam, Kota Kinabalu, Sabah  
Tel: 088-388 278 | Fax: 088-388 279



[www.makita.my](http://www.makita.my)  
✉ makita@makita.my